

**0~+3 W**

**POSITIVE TOLERANCE**

Positive tolerance of up to 3W delivers higher output reliability.

**545W**

**POWER OUTPUT**

Monocrystalline Module

**4mm<sup>2</sup> cable 55cm**

**OUTPUT CABLES**

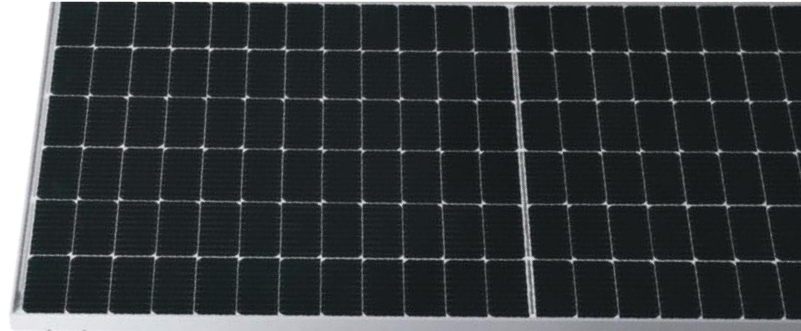
Inlcuding MC4 connector

**21.08%**

**MODULE EFFICIENCY**

half-cell designs improves the module's performance and durability.

## Mono Half Solar Panel



**12** **YEAR**  
**WARRANTY**

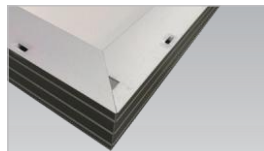


**A RELIABLE INVESTMENT**



### JUNCTION BOX

WATERPROOF PROTECTION GRADE:IP67/IP68  
SAFETY LEVEL: CLASS II  
MAXIMUM SYSTEM VOLTAGE: 1500V  
OUTSTANDING WATERPROOF LEVEL.  
EFFECTIVELY RESIST HARSH ENVIRONMENTS



### FRAME

STRONG MACHINICAL LOAD  
RESISTANCE UP TO 5400PA  
ANODIC OXIDATION LAYER RESISTANT TO  
CHEMICAL CORROSION AVAILABLE  
IN SILVER AND BLACK



### HALF-CUT TECHNOLOGY

New Circuit Design, Lower Internal Current And Lower Internal Resistance Loss



### SIGNIFICANTLY AVOIDING HEAT SPOT

The unique circuit design to reduce the temperature Of heat spot significantly,so that to reduce the power loss And then increase the output of modules.



### LOWER COST

Increasing power generation can reduce the cost per kilowatt-hour



### EXCELLENT PERFORMANCE OF PID RESISTANCE

The performance of PID resistance(Potential Induced Degradation) passed the standard of TUV Nord.

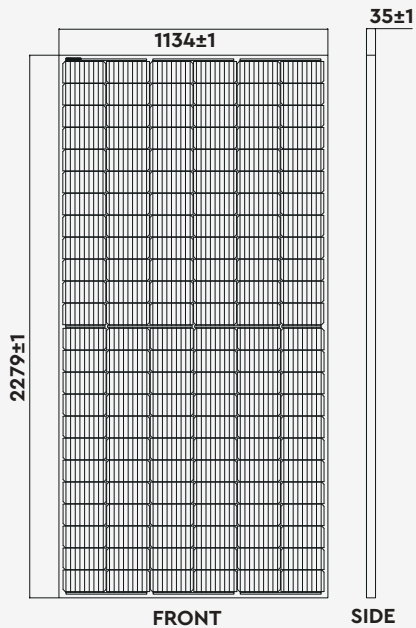


SOLD IN OVER  
**70** COUNTRIES

[www.vtacexports.com](http://www.vtacexports.com)

ONE BRAND, ENDLESS SOLUTIONS.

### DRAWING AND DIMENSIONS



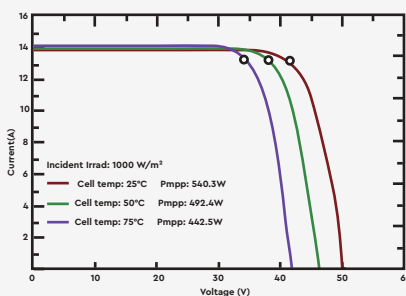
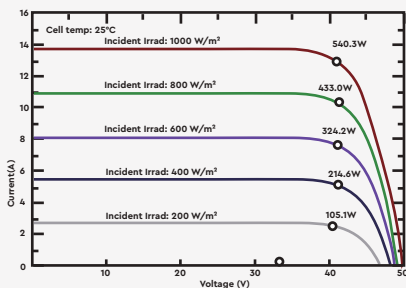
### ELECTRICAL DATA (STC)

Peak Power(Pmax)	545.00
Maximum Power Voltage(Vmp)	41.93
Maximum Power Current(Impp)	13.00
Open Circuit Voltage(Voc)	49.90±3%
Short Circuit Current(Isc)	13.92±3%
Module Efficiency( % )	21.08

### ELECTRICAL DATA (NOCT)

Peak Power(Pmax)	405.1
Maximum Power Voltage(Vmp)	38.93
Maximum Power Current(Impp)	10.41
Open Circuit Voltage(Voc)	46.73±3%
Short Circuit Current(Isc)	11.13±3%

### IV CURVE



### TEMPERATURE & MAXIMUM RATING

Maximum System Voltage (V)	1500 V
Maximum Series Fuse Rating (A)	25 A
Power Tolerance	0~+3 W
Pmax Temperature Coefficient (W/°C)	-0.350 %/°C
Voc Temperature Coefficient (V/°C)	-0.285 %/°C
Isc Temperature Coefficient (A/°C)	+0.045 %/°C
NOCT Nominal Operating Cell Temperature (°C)	45±2°C
Operating and Storage Temperature (°C)	-40~+85°C

### MECHANICAL CHARACTERISTICS

Cell Type	182*91 Mono
No. of Cells	144 (12*12)
Dimensions	2279*1134*35mm
Weight	28.40kg
Front Glass	3.2mm high transmission, low iron, tempered glass
Frame	Anodized Aluminium Alloy
Junction box	IP67/IP68 3diodes
Output cables	4mm² cable 35cm (Including MC4 connector)
MaxWind Load/Snow Load	2400Pa/5400Pa

### LISTING DETAILS

Modle No: VT-545W  
 SKU Code: 11354  
 EAN Code: 3800157682220

### MASTER BOX PACKAGING

Qty Per Pallet: 31pcs/pallet